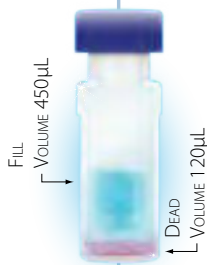


Filter Vial CATALOG APPLICATION NOTES

Standard
Filter Vial™
Patented



Standard For
Most Samples



EXTREME/FV®
Patented



For Particulate
Laden Samples



nanofilter Vial™
Patented



When Every
µL Counts



Local Distributor

Thames Restek UK Ltd
Units 8 -16 Ministry Wharf, Wycombe Road, Saunderton
Buckinghamshire, HP14 4HW
Tel: 01494 563377 | Fax: 01494 564990
sales@thamesrestek.co.uk | www.ThamesRestek.co.uk



Copyright ©2014 Thomson Instrument Company "Solutions at work"[™]
Original release 2014
version 1.0.0

Contact Thomson Instrument Company:

1121 South Cleveland Street
Oceanside, California 92054

Toll Free	800-541-4792
Phone	760-757-8080
Fax	760-757-9367
Email	folks@htslabs.com
Website	htslabs.com

Filter Vials have the following patents:
US 7,790,117, 8,211,384, 8,383,006, 8,322,539, EU patent 2268252,
EP2268252B1, Singapore Patent 164909, Worldwide Patents Pending

For up to date patent and trademark information please see htslabs.com.

Table of Contents

Overview	4
Application Section	5
Membrane Material	6
Membrane Pore Size	6
Leachables Study	7
Standard Filter Vials	10
Open Access LCMS	11
Protein Precipitation	12
How to Mass Spec Your TLC Spots with Filter Vials	13
Corn Syrup Analysis Saccharides (E-61 CRA Test)	14
eXtreme FV®	15
Improved Sample Preparation Methods for Athlete	
Doping Analysis of Common Compounds in Urine by LCMS	16
Pesticide Applications - Soil & Vegetation	21
eXtreme FV® vs SPE for the Analysis of Pesticides in Orange Juice	23
Supplement Analysis of Huperzine A by HPLC	28
Antibody Analysis with eXtreme FV®	29
Analysis of Nitrosamines in Tobacco	30
nano Filter Vials™	31
10µL Filtration with 2µL Injection	32
Appendix	35
Chemical Compatibility	35
Compound Compatibility	40



Filter Vial Overview

Thomson Filter Vials (patented) are a single system which replaces HPLC Vials, HPLC Caps, Syringes, & Syringe Filters for the filtration of samples. In 15 seconds, Filter Vials allow for Sample Preparation of unfiltered samples to filtered samples in an autosampler ready vial. The filter vial consists of two parts: a filter vial shell and a plunger which includes a filter on one end and a vial cap on the other end. Samples are filtered by pipetting the sample into the filter vial shell, inserting the plunger into the shell, and then pushing the plunger into the shell.

Thomson Filter Vials simplify general filtration by replacing syringes & syringe filters, centrifuging spin columns and/or liquid-liquid extractions.

Applications for Thomson Filter Vials include all sample types to be analyzed by HPLC, UHPLC, LC-MS and GC-MS.

Filter Vial



Max Fill Vol. 450 μ L
Dead Vol. 120 μ L

Standard Filter Vials (120 μ L Dead Volume)

Thomson Standard Filter (*patented*) can be used for samples containing less than 10% solid particulates. The filter vial consists of two parts: a filter vial shell and a plunger which includes a single layer filter on one end and a vial cap on the other end.

Applications for Thomson Standard Filter Vials include filtration of catalysts from organic and medicinal chemistry synthesis reactions, saccharide analysis in corn syrup, and in-vial protein precipitation.

EXTREME|FV



Max Fill Vol. 450 μ L
Dead Vol. 120 μ L

eXtreme|FV[®] (Multi-Layered Filtration)

Thomson eXtreme|FV[®] (*patented*) offer multi-layer filtration for viscous samples and samples containing up to 30% solid particulates. The filter vial consists of two parts: a filter vial shell and a plunger which includes a multi-layer filter on one end and a vial cap on the other end.

eXtreme|FV[®] allow for compounds to be separated from the matrix which, results in both a higher signal to noise ratio and peaks that are more differentiated.

Prior to the introduction of the eXtreme|FV[®], many samples containing high levels of particulates were “filtered” by using an SPE step in the method. These methods are readily amendable to the replacement of the SPE step using a rapid and lower cost eXtreme|FV[®] step.

Applications for Thomson eXtreme|FV[®] include filtration of cell and cell debris from cell culture; pesticide analysis in food, tissue, soil, and water; and toxicology analysis in blood and urine.

nano|Filter Vial™



Max Fill Vol. 250 μ L
Min Fill Vol. 10 μ L (for 2 μ L injection)

nano|Filter Vials™ (10 μ L Minimum Volume)

Thomson nano|Filter Vials™ offer a very low dead volume allowing one to filter as little as 10 μ L of sample with enough remaining filtrate to make a 2 μ L injection. The filter vial consists of two parts: a filter vial shell with mating bottom surface and a plunger which includes a filter on one end and a screw cap vial on the other end.

Applications include the analysis of enzymes, peptides, DNA, RNA, synthesis reaction intermediates, finished products, saliva, samples available in low volumes, in-vial evaporation and re-suspension for sample concentration and buffer/solvent change.

Application Selection



See our **Technical Library**
for more **Applications**
htslabs.com

nano|FV™

nano|FV™ Pre-Slit Cap

Standard Filter Vial










Low Evaporation

eXtreme|FV®

10µL-100µL	●	●			
120µL-450µL			●	●	●
UPLC Compatible	●	●	●	●	●
GCMS Compatible	●			●	
≤ 30% Solids					●
Viscous		●			●
Replacement for SPE					●
General Liquids < 10% solids	●	●	●	●	●
Cell Fermentation	●	●	●	●	●
Particulate Removal	●	●	●	●	●
Automation Compatible	●	●	●	●	●
Small Molecules	●	●	●	●	●
Food & Supplements			●	●	●
Toxicology	●	●	●	●	●
Pesticides	●	●	●	●	●
Environmental	●	●	●	●	●
Sterile Testing	●				




Filter Vial Membrane Material

The recommended membrane for sample filtration is based on the percentage of organic solvent in the sample and the amount of protein binding.

	AQUEOUS	ORGANIC	LOW PROTEIN BINDING
PTFE			
PVDF			
Nylon			
PES			

Filter Vial Membrane Pore Size

The recommended membrane pore size for sample filtration is based on the cell or cell debris content of the sample and the particle size of the packing material in the chromatography column used to analyze the sample. If the sample contains cells or cellular debris, then a 0.2µm pore size membrane is recommended to maintain system sterility.

	Cells or Cell Debris in Sample	Chromatography Column Particle Size <3µm	Chromatography Column Particle Size >3µm
0.2µm Pore Size			
0.45µm Pore Size			

Filter Vial Leachables

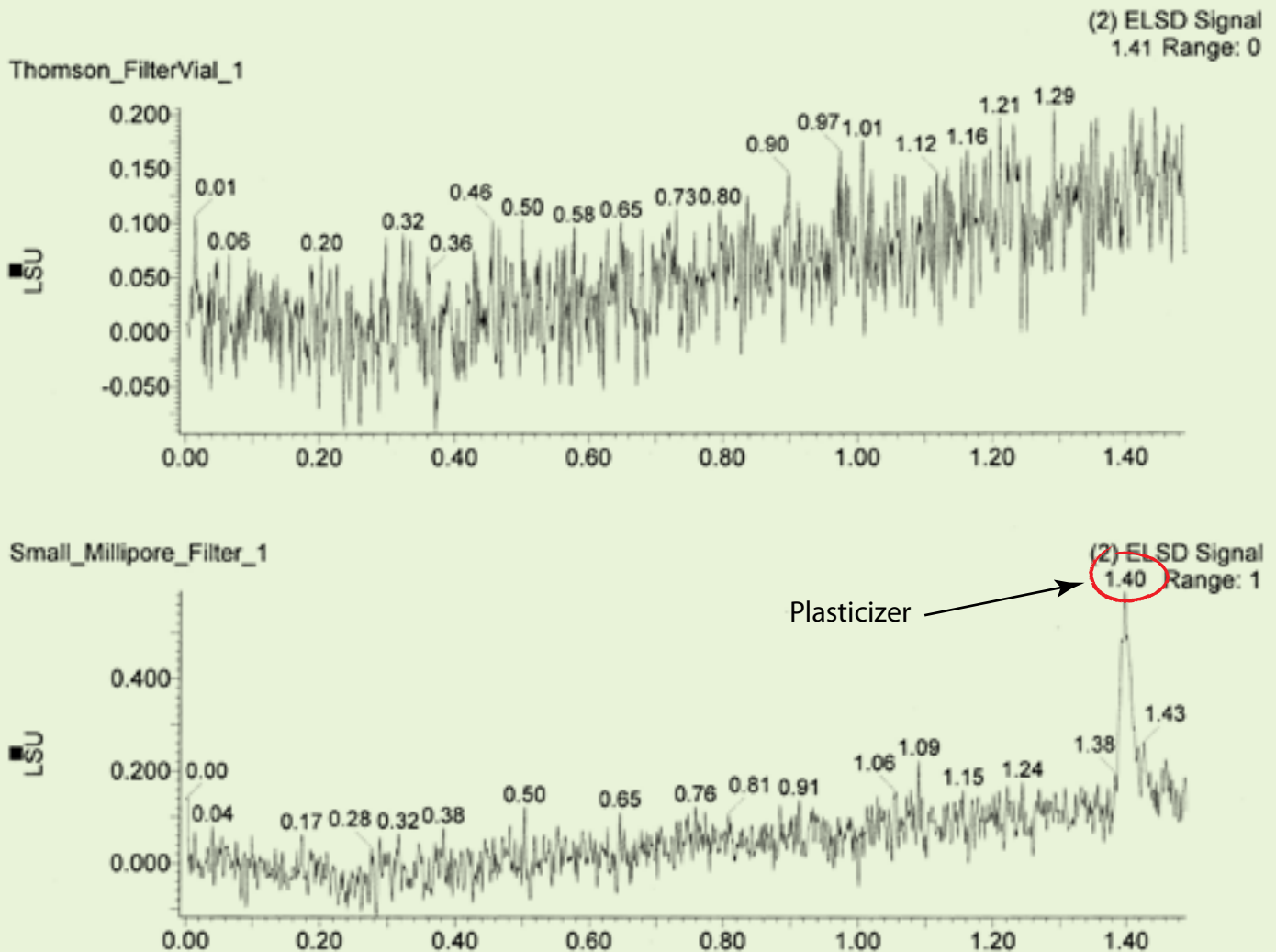
Thomson Filter Vials are manufactured without the use of plastizers or mold release agents making them LC/MS clean.

Testing with ELSD, PDA, and MS detection by Takeda Pharmaceutical showed no leaching from Thomson Standard Filter Vial with a 0.45um, PTFE membrane compared to significant leaching from Millipore Millex-FH® Filter, 0.45µM, hydrophobic PTFE, 4mm.

Method: A. Water B. ACN 45-90% with .05% TFA Ballistic Gradient over 1.4 minutes using Waters® Acquity® UPLC Thomson Filter Vial (patented) Part # 35540-500 Filter Vial 0.45µM hydrophobic PTFE, w/ Pre-Slit Cap Millipore Syringe Filter Part #:SLFHR04NL Millex-FH® Filter, 0.45µM, hydrophobic PTFE, 4mm, non-sterile

Plasticizer Leachable

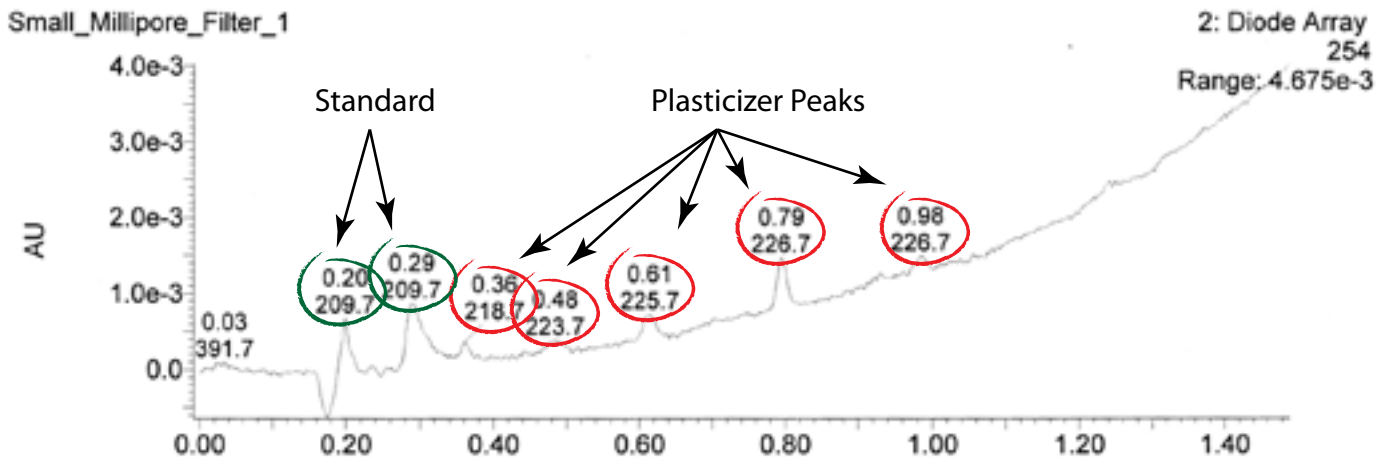
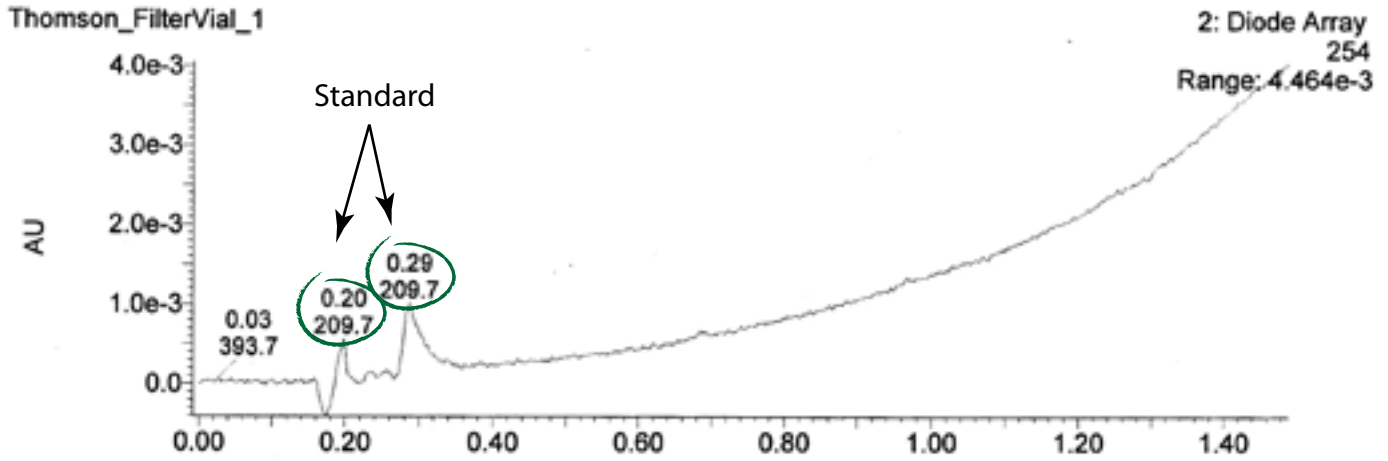
Testing by Takeda® Mass Spec. ES+ Data



Method: A. Water B. ACN 45-90% with .05% TFA Ballistic Gradient over 1.4 minutes using Waters® Acquity® UPLC Thomson Filter Vial (patented) Part # 35540-500 Filter Vial 0.45µM hydrophobic PTFE, w/ Pre-Slit Cap Millipore Syringe Filter Part #:SLFHR04NL Millex-FH® Filter, 0.45 µm, hydrophobic PTFE, 4 mm, non-sterile.

Plasticizer Leachable

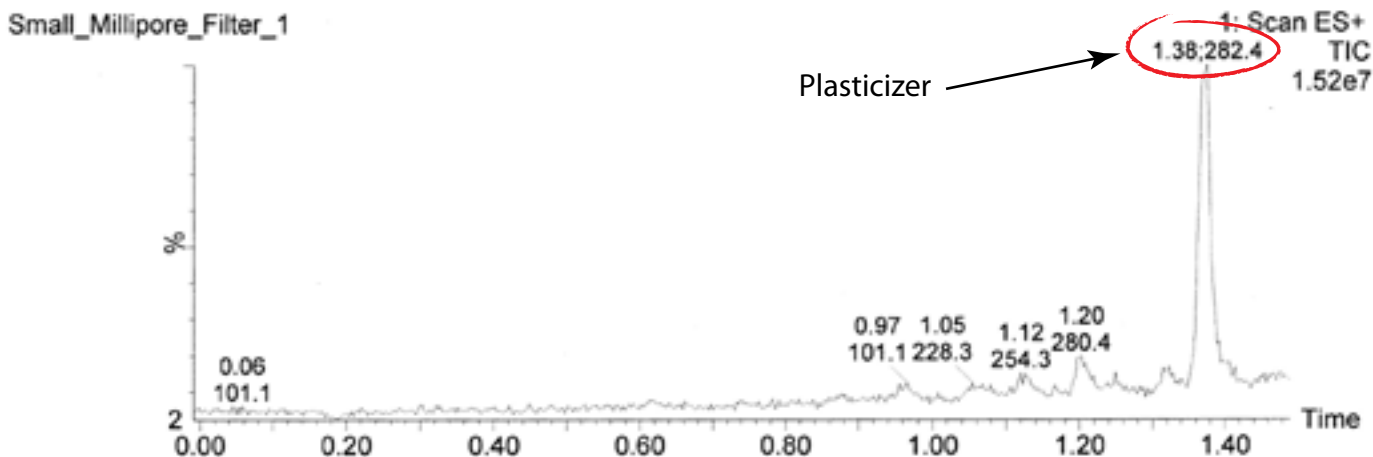
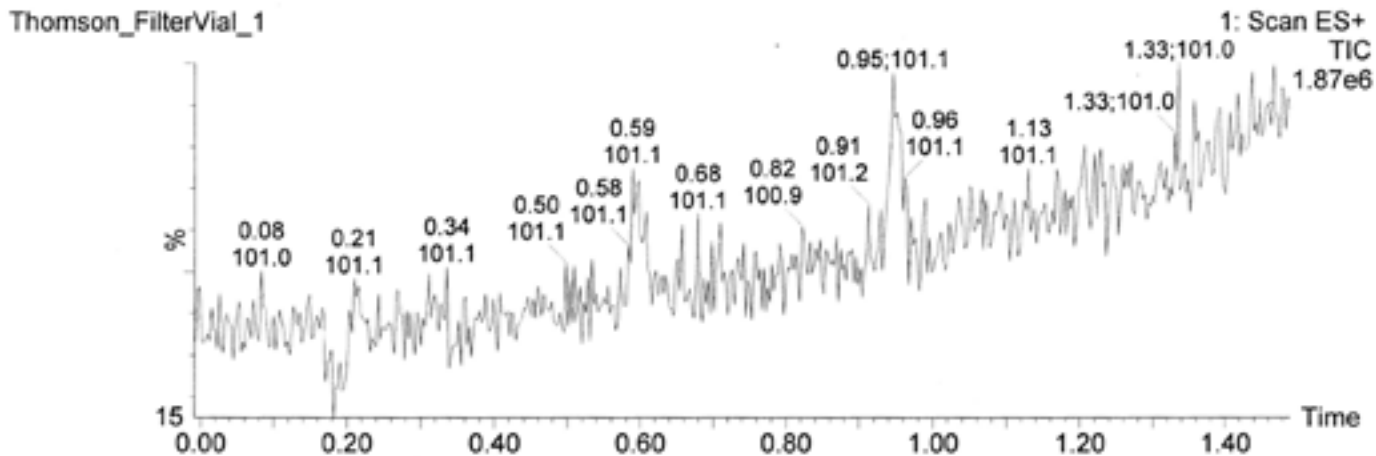
Testing by Takeda® UV Data



Method: A. Water B. ACN 45-90% with .05% TFA Ballistic Gradient over 1.4 minutes using Waters® Acquity® UPLC Thomson Filter Vial (patented) Part # 35540-500 Filter Vial 0.45µM hydrophobic PTFE, w/ Pre-Slit Cap Millipore Syringe Filter Part #:SLFHR04NL Millex-FH® Filter, 0.45 µm, hydrophobic PTFE, 4 mm, non-sterile.

Plasticizer Leachable

Testing by Takeda® Mass Spec ES+ Data Part 2



Method: A. Water B. ACN 45-90% with .05% TFA Ballistic Gradient over 1.4 minutes using Waters® Acquity® UPLC Thomson Filter Vial (patented) Part # 35540-500 Filter Vial 0.45µM hydrophobic PTFE, w/ Pre-Slit Cap Millipore Syringe Filter Part #:SLFHR04NL Millex-FH® Filter, 0.45 µm, hydrophobic PTFE, 4 mm, non-sterile.