



Expanded Resprep SPE and SLE Lineup

Our Resprep lineup continues to grow to meet the diverse needs of our customers.

Unlock Your Lab's Full Potential

Get Started with 1, 5, and Wax Columns From Restek

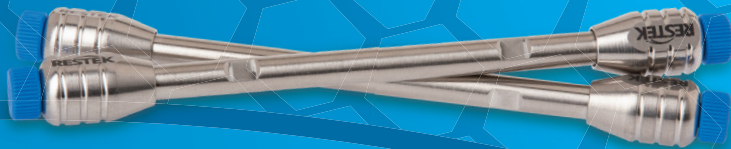
Save time and money by finding the right GC columns fast!



MegaMix Ampuls Set the Environmental Standard

- Developed for the analysis of volatiles and semivolatiles.
- Maximized number of target analytes in a single ampul.
- Superior stability.





The Raptor ARC-18 Phase: Ahead of the Curve for Large, Multiclass Lists by Mass Spec

- Ideal for high-throughput LC-MS/MS applications with minimal sample preparation.
- Well-balanced retention profile for better detection and integration of large, multiclass analyte lists.
- Sterically protected to endure low-pH mobile phases without sacrificing retention or peak quality.

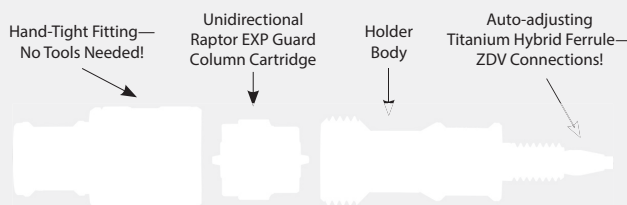


ID	Length	qty.	cat.#	Price £
1.8 µm Particles				
	30 mm	ea.	9314232	442.60
2.1 mm	50 mm	ea.	9314252	480.85
	100 mm	ea.	9314212	500.30
	150 mm	ea.	9314262	513.05
3.0 mm	50 mm	ea.	931425E	480.85
	100 mm	ea.	931421E	500.30
2.7 µm Particles				
	30 mm	ea.	9314A32	376.45
2.1 mm	50 mm	ea.	9314A52	409.20
	100 mm	ea.	9314A12	442.00
	150 mm	ea.	9314A62	474.20
3.0 mm	30 mm	ea.	9314A3E	376.45
	50 mm	ea.	9314A5E	409.20
	100 mm	ea.	9314A1E	442.00
4.6 mm	150 mm	ea.	9314A6E	474.20
	30 mm	ea.	9314A35	376.45
	50 mm	ea.	9314A55	409.20
5 µm Particles	100 mm	ea.	9314A15	442.00
	150 mm	ea.	9314A65	476.20
	50 mm	ea.	9314552	415.25
2.1 mm	100 mm	ea.	9314512	454.85
	150 mm	ea.	9314562	494.45
	30 mm	ea.	931453E	375.60
3.0 mm	50 mm	ea.	931455E	415.25
	100 mm	ea.	931451E	454.85
	150 mm	ea.	931456E	494.45
4.6 mm	50 mm	ea.	9314555	415.25
	100 mm	ea.	9314515	454.85
	150 mm	ea.	9314565	494.45
	250 mm	ea.	9314575	592.05

Protect and Extend the Lifetime of Your ARC-18 Analytical Column with EXP Guard Cartridges



- Free-Turn architecture lets you change cartridges by hand without breaking inlet/outlet fluid connections—no tools needed.
- Patented titanium hybrid ferrules can be installed repeatedly without compromising high-pressure seal.
- Auto-adjusting design provides ZDV (zero dead volume) connection to any 10-32 female port.
- Guard column cartridges require EXP direct connect holder (cat.# 25808).



Raptor ARC-18 EXP Guard Column Cartridges

Particle Size	Size	qty.	cat.#	Price £
UHPLC	5 x 2.1 mm	3-pk.	9314U0252	420.10
UHPLC	5 x 3.0 mm	3-pk.	9314U0253	412.80
2.7 µm	5 x 2.1 mm	3-pk.	9314A0252	365.75
2.7 µm	5 x 3.0 mm	3-pk.	9314A0253	365.75
2.7 µm	5 x 4.6 mm	3-pk.	9314A0250	365.75
5 µm	5 x 2.1 mm	3-pk.	931450252	365.75
5 µm	5 x 3.0 mm	3-pk.	931450253	365.75
5 µm	5 x 4.6 mm	3-pk.	931450250	365.75

Maximum cartridge pressure: 1034 bar/15,000 psi* (UHPLC), 600 bar/8700 psi (2.7 µm); 400 bar/5800 psi (5 µm)

* For maximum lifetime, recommended maximum pressure for UHPLC particles is 830 bar/12,000 psi.

EXP Direct Connect Holder

Description	qty.	cat.#	Price £
EXP Direct Connect Holder for EXP Guard Cartridges (includes hex-head fitting & 2 ferrules)	ea.	25808	395.85



Stop Particulates Before They Reach Your Injector and Rob Productivity

Fast, Eco-Friendly Filtration with Just a Squeeze of Your Fingers

- Vials minimize sample loss by eliminating multiple transfers.
- Color-coded caps allow easy identification of 0.2 µm or 0.45 µm membranes in PVDF, PTFE, PES, or nylon.
- Low dead volume units feature rugged polypropylene vial and insert.
- Fit most standard 12x32 mm autosamplers, including UHPLC instruments.



Thomson SINGLE StEP Low-Evaporation Filter Vials

Description	Color	Porosity	qty.	cat.#
PTFE (polytetrafluoroethylene)	green cap	0.2 µm	100-pk.	25868
	blue cap	0.45 µm	100-pk.	25872
PVDF (polyvinylidene fluoride)	red cap	0.2 µm	100-pk.	25869

Thomson SINGLE StEP Nano Filter Vials

Description	Color	Porosity	qty.	cat.#
PTFE (polytetrafluoroethylene)	green standard cap	0.2 µm	100-pk.	25862
PVDF (polyvinylidene fluoride)	red standard cap	0.2 µm	100-pk.	25864

Thomson SINGLE StEP Standard Filter Vials

Description	Color	Porosity	qty.	cat.#
PES (polyethersulfone)	grey preslit cap	0.2 µm	100-pk.	25897
PTFE (polytetrafluoroethylene)	green preslit cap	0.2 µm	100-pk.	25893
PVDF (polyvinylidene fluoride)	yellow preslit cap	0.45 µm	100-pk.	25896

Also available in eXtreme, low-evaporation, and nano versions at

www.restek.com/singlestep

Our Selection of Cannabis Standards Keeps Expanding

Target Mycotoxins in Cannabis with Our New Ochratoxin A & Aflatoxins Standards



Mycotoxins are toxic secondary metabolite compounds produced by mold or fungi. Due to the toxicity of certain mycotoxins that can be found on cannabis plants, there is a growing need to detect their presence in both raw plant materials and finished cannabis products.

Restek now offers two new mycotoxin certified reference standards (CRMs): Ochratoxin A and Aflatoxins (B1, B2, G1, G2).

These new standards enable labs to expand their cannabis analyses with a Restek solution when coupled with our high-throughput Raptor ARC-18 (cat.# 9314A12) LC column.

Ochratoxin A Standard

Conc. in Solvent	cat.#	Price £
10 µg/ml, Acetonitrile, 1 mL/ampul	34122 (ea.)	176.30

Aflatoxins (B1, B2, G1, G2) Standard (4 components)

Conc. in Solvent	cat.#	Price £
10 µg/ml, Acetonitrile, 1 mL/ampul	34121 (ea.)	373.25

Raptor ARC-18 LC Column

Size	cat.#	Price £
2.7 µm 100 x 2.1 mm	9314A12	442.00



Essentials For Building Your Chromatography System

VICI Jour

PEEK Unions and Fittings

PEEK fingertight fittings and PEEK unions are ideal for connecting the modules of any LC systems in combination with PEEK capillaries.

- material PEEK GF30
- Manufactured by mold injection
- 10-32 thread
- biocompatible
- knurled head for easy manual tightening
- For use with 1/16" OD tubing
- pressure rating 350bar (5000psi)
- autoclavable at 121°C



JR-0610

For use on LC equipment with limited space, VICI Jour offers the NEW molded one-piece finger-tight fitting JR-5513 in short form. It is also available as a long version, fitting JR-5518, with knurled head for easy hand tightening; JR-5518 also offers a hex-headed part. The fittings are sold as bulk or in packages of 5 (JR-5513-5 / JR-5518-5).

The fittings are manufactured from PEEK GF (Glass Filled) and are rated up to 350bar (5000psi). The fittings are designed for use with 1/16" OD tubing in 10-32 threaded ports.



JR-5518

PEEK-HT Fittings

The VICI Jour UHPLC black fingertight fitting JR-55031-1 made from special raw material PEEK-HT is produced with the same shape as color coded PEEK fingertight.

These flat headed fittings are rated for pressures up to 500bar if manually tightened and up to 7250/15000psi if tightened by a tool (1/4" open wrench). We offer these fingertight fittings as bulk (PNs JR-55031-1) and also in packs of 5 (PNs JR-55031-5).



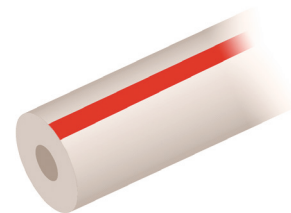
JR-55031

PEEK Tubing

JR-T-5999, red color-coded PEEK tubing, OD 1/16" x ID 0.13 mm

Standard 1/16" OD, striped PEEK tubing are offered in pack sizes of 1.5 m, 3 m, 5 m, 10 m, 15 m, 25 m, and as bulk ware from 26 meters length. Most used in LC are striped color coded PEEK tubing with 1/16" OD and IDs between 0.13 mm and 0.50 mm.

- material PEEK natural
- Manufactured by extrusion
- biocompatible
- max. recommended working pressure: up to 345-460bar (5000-6700psi),
- autoclavable at 121°C



SS Tubing

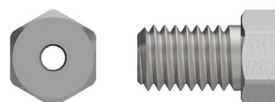


Standard 1/16" OD SS tubing with IDs between 0.18 mm and 0.50 mm are offered in pack sizes of 1.5 m, 3 m, 10 m, and as bulk ware from 11 meters length, PNs JR-T-625-05/10/20.

Pack Size		1.5m	3m	10m
ID: 0.10 mm	JR-T-625-03	-M1.5	-M3	-M10
ID: 0.13 mm	JR-T-625-04	-M1.5	-M3	-M10
ID: 0.18 mm	JR-T-625-05	-M1.5	-M3	-M10
ID: 0.25 mm	JR-T-625-10	-M1.5	-M3	-M10
ID: 0.50 mm	JR-T-625-20	M1.5	-M3	-M10
ID: 0.75 mm	JR-T-625-30	-M1.5	-M3	-M10
ID: 1.00 mm	JR-T-625-40	-M1.5	-M3	-M10

SS Nuts and Ferrules

VICI offers several different SS nuts and ferrules with competitive pricing for the use with 1/16" OD SS tubing. The nuts are different in shape, length and head size depending on the equipment, i.e. the space available for tightening the tubing on the ports of the LC module like pump, valve (autoinjector or single valve), column, detector etc.



JR-ZN1

Raptor

LC Columns

Selectivity Accelerated



Separate a Wide Variety of Polar Analytes with a Novel Hybrid Stationary Phase

Restek's new Raptor Polar X column lets you easily analyze acidic, basic, and neutral polar compounds without time-consuming derivatization or complex ion pairing. This unique hybrid phase switches between HILIC and ion-exchange retention modes with simple mobile phase changes and short equilibration times, making it ideal for a wide range of polar analytes, especially when coupled with mass spectrometry.

ID	Length	qty.	cat.#	Price £
2.7 µm Particles				
2.1 mm	30 mm	ea.	9311A32	537.20
	50 mm	ea.	9311A52	570.80
	100 mm	ea.	9311A12	604.35



Learn more about Raptor Polar X columns at www.restek.com/PolarX

Robust, Accurate and Cost Effective Camsco Desorption Tubes

- Over 2.5 million thermal desorption tubes built since 1991.
- Quick and reliable technical support.
- Fastest TD tube delivery times.
- Lifetime traceability & 100% replacement guarantee.

External Tube Advantages

- Universal barcode
- COGNI System
- Unconditioned tubes come with PTFE Micro Caps

Internal Tube Advantages

- Standard preconditioned sorbent
- Inert coated wire mesh retaining gauze
- Inert coated G-clip
- Surgical-grade 316L Stainless Steel
- Schott Duran Borosilicate Glass 3.3



To find out more about the capabilities of Camsco Desorption Tubes, please contact your local Technical Sales Representative.


CAMSCO
Sample Quality

Build a Rock-Solid Analytical Foundation with Restek Organic Reference Materials

Produced in our ISO-accredited labs to satisfy requirements for certified reference materials (CRMs)



Internal and Surrogate Standards

SV Internal Standard Mix

(6 components)

Conc. in Solvent	CRM?	Min Shelf Life on Ship Date	Max Shelf Life on Ship Date	Shipping Conditions	Storage Temp.	qty.	cat.#
2000 µg/mL each in methylene chloride, 1 mL/ampul	Yes	6 months	71 months	Ambient	10 °C or colder	ea.	31206
4000 µg/mL each in methylene chloride, 1 mL/ampul	Yes	6 months	71 months	Ambient	10 °C or colder	ea.	31006

Acid Surrogate Mix (4/89 SOW)

(3 components)

Conc. in Solvent	CRM?	Min Shelf Life on Ship Date	Max Shelf Life on Ship Date	Shipping Conditions	Storage Temp.	qty.	cat.#
2000 µg/mL each in methanol, 1 mL/ampul	Yes	6 months	45 months	Ambient	10 °C or colder	ea.	31025

B/N Surrogate Mix (4/89 SOW)

(3 components)

Conc. in Solvent	CRM?	Min Shelf Life on Ship Date	Max Shelf Life on Ship Date	Shipping Conditions	Storage Temp.	qty.	cat.#
1000 µg/mL each in methylene chloride, 1 mL/ampul	Yes	6 months	71 months	Ambient	10 °C or colder	ea.	31024

MegaMix Ampuls Set the Environmental Standard

- Developed for the analysis of volatiles and semivolatiles (a.k.a., extractables).
- Maximized number of target analytes in a single ampul.
- Formulated and packaged for superior stability.
- Two independently produced lots in inventory for most mixes.

8270 MegaMix Standard

(76 components)

Conc. in Solvent	CRM?	Min Shelf Life on Ship Date	Max Shelf Life on Ship Date	Shipping Conditions	Storage Temp.	qty.	cat.#
1000 µg/mL each in methylene chloride (3-methylphenol and 4-methylphenol at 500 µg/mL), 1 mL/ampul	Yes	6 months	18 months	Ambient	0 °C or colder	ea.	31850

For full compound lists and other MegaMix standards, go to www.restek.com/megamix

Custom Flexibility with Restek Reference Standards

Restek offers a wide range of surrogate, internal standard, calibration check, matrix spike, and tuning mixtures. If your list contains compounds not in our comprehensive inventory, we are happy to provide custom mixtures to meet your specific needs.

- ISO accreditation covers our catalog standards and your custom orders.
- Feasibility verification for every order.

Request a custom standard at www.restek.com/solutions



Maximized
target analytes
in 1 ampul!

Excellence Is Our Standard

Restek Air Valve Excellence (RAVE) valves —standard on all Restek air canisters— feature proven long life, leak-free performance (helium leak tested to 1×10^{-6} mL/sec), and effortless operation.

SilcoCan Air Sampling Canisters with RAVE Valve

Ideal for low-level reactive sulfur (5–20 ppb), TO-14A, or TO-15 compounds

Siltek-treated canister and valve offers unsurpassed inertness, even for sulfur-containing or brominated compounds.

Modification	Volume	qty.	cat.#	Price £
2-Port Siltek-Treated RAVE Valve	1 L	ea.	27401	813.35
2-Port Siltek-Treated RAVE Valve	3 L	ea.	27405	831.75
2-Port Siltek-Treated RAVE Valve	6 L	ea.	27409	859.40
2-Port Siltek-Treated RAVE Valve	15 L	ea.	27413	1,547.55

TO-Can Air Sampling Canisters with RAVE Valve

Optimized for Methods TO-14A, TO-15, IP-1A, ASTM D5466, OSHA PV 2120, and NJ DEP Low Level TO-15

SUMMA canister equivalent features proprietary electropolished surface that maintains compound stability.

Modification	Vol.	qty.	cat.#	Price £
2-Port RAVE Valve	1 L	ea.	27416	627.75
2-Port RAVE Valve	3 L	ea.	27418	641.50
2-Port RAVE Valve	6 L	ea.	27420	698.90
2-Port RAVE Valve	15 L	ea.	27422	1,253.00

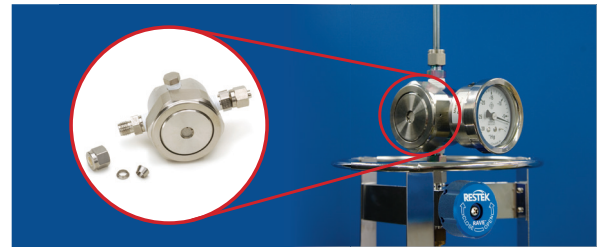
Do not exceed canister maximum pressure of 40 psig (2.75 bar).



Just a Sampling of Air Canister Replacement Parts

Siltek-treated Stainless Steel for Maximum Inertness

Veriflo Flow Controllers (Siltek Treated)



Flow Capacity	Orifice Size	qty.	cat.#	Price £
0.5–2 mL/min	0.0008"	ea.	24232	1,098.75
2–4 mL/min	0.0012"	ea.	24255	1,098.75
4–8 mL/min	0.0016"	ea.	24256	1,098.75
15–30 mL/min	0.0030"	ea.	24258	1,098.75

Replacement Orifices (Siltek Treated)

Flow Capacity	Orifice Size	qty.	cat.#	Price £
0.5–2 mL/min	0.0008"	ea.	24219	242.55
2–4 mL/min	0.0012"	ea.	24233	242.55
4–8 mL/min	0.0016"	ea.	24234	242.55
8–15 mL/min	0.0020"	ea.	24235	242.55

Find our full selection of replacement parts at www.restek.com/air

Dramatically increase lab efficiency!

- High-capacity, fully automated, easy-to-use canister cleaning oven
- Double your cleaning capacity; holds twice as many cans as other models.



TO-Clean Oven w/Oil Free Pump

Type	Voltage	Certification/Compliance	qty.	cat.#
Edwards nXDS6i Dry Scroll Pump	120 V, 60 hz	CE	ea.	26379
Edwards nXDS6i Dry Scroll Pump	220/230 V, 50/60 hz	CE	ea.	26380
Edwards nXDS10i Dry Scroll Pump	120 V, 60 hz	CE	ea.	26381
Edwards nXDS10i Dry Scroll Pump	220/230 V, 50/60 hz	CE	ea.	26382

Shipping: FedEx Ground, unless otherwise requested. Costs vary depending on ship-to location.

Gas Sampling Bags

Cost-Effective Alternatives for Air Sampling

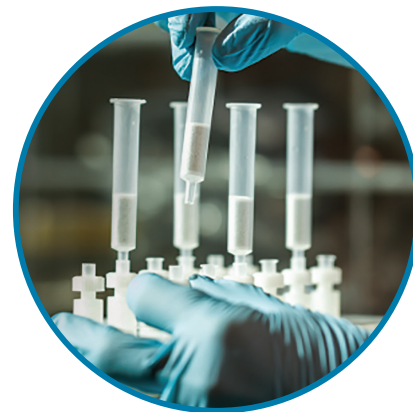
- Ideal for whole air sampling at ppb-ppm levels.
- Tedlar, ALTEF, and multi-layer foil bags in a wide range of sizes.
- Extensive line of sampling accessories and replacement parts.

www.restek.com/air



Expanded Resprep SPE and SLE Lineup

Our Resprep lineup continues to grow to meet the diverse needs of our customers. Here is a selection of our newest additions, all designed to be effective and essential tools in your sample preparation workflow.



Resprep S-DVB SPE Cartridge

- High-purity material with highest reproducibility and lowest blank values.
- Excellent recovery rates, especially for the enrichment of pharmaceuticals and active ingredients.
- Hydrophobic styrene-divinylbenzene (SDVB) copolymer, pH stability 1–14.
- Recommended analytes: pharmaceuticals/active ingredients from tablets, creams, and water/wastewater; drugs from blood, plasma, serum, and urine; trace analysis of herbicides, pesticides, PAHs, PCBs, and phenols from water.

Description	Packing	Volume	qty.	cat.#	Price £
Resprep S-DVB	500 mg spherical styrene-divinylbenzene (SDVB) copolymer	6 mL	30-pk.	28937	223.20

Resprep Silica-Based SPE Cartridges

- High-quality, silica-based adsorbents.
- Suitable for a range of sample matrices.
- Reverse-phase, mixed-mode, and ion-exchange options.
 - Resprep Alumina SPE Cartridges (*Reverse-Phase mode*)
 - Resprep C8 SPE Cartridges (*Reverse-Phase mode*)
 - Resprep C18 SPE Cartridges (*Reverse-Phase mode*)
 - Resprep Amino (NH₂) SPE Cartridges (*Mixed-Mode phase*)
 - Resprep Diol SPE Cartridges (*Mixed-Mode phase*)
 - Resprep PSA SPE Cartridges (*Mixed-Mode phase*)
 - Resprep SAX (*Silica Based*) SPE Cartridges (*Ion-Exchange mode*)
 - Resprep WCX (*Silica Based*) SPE Cartridges (*Ion-Exchange mode*)
 - Resprep Florisil SPE Cartridges (*Normal-Phase mode*)
 - Resprep Silica SPE Cartridges (*Normal-Phase mode*)

Resprep Polymeric SPE Cartridges and 96-well plates

- Silica-free, bonded polymeric material.
- Stable over a wide pH range (0–14).
- High surface area brings higher loading capacity compared to silica-based sorbents.

Explore our complete Resprep SPE and SLE range at restek.com/Resprep

Resprep PLR SPE Products

- Removes both proteins and phospholipids.
- Avoids signal suppression by removing interfering phospholipids.
- Straightforward and effective with no method development needed.

Resprep SLE Cartridges and 96-Well Plates

- Removes proteins, phospholipids, and salts
- Suitable for a wide range of sample matrices and analyte pKa values.
- Faster and easier than SPE and liquid-liquid extraction.

Resprep Quick-Replace SPE Vacuum Manifolds (12- or 24-Port)

- Quick-replace valve liners ensure a clean flow path and eliminate cross-contamination.
- Individual screw-type valves in each SPE port provide precise flow control.
- Compatible with any standard male luer end SPE cartridge.



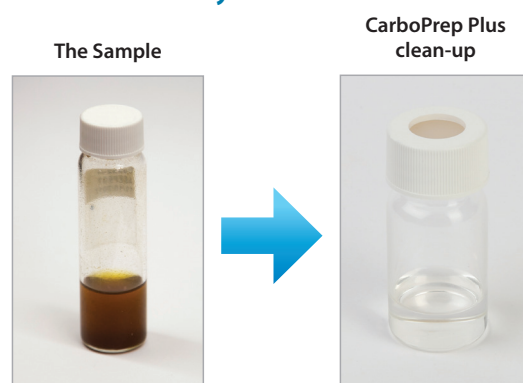
Keep Your Instruments Up and Running with CarboPrep Plus SPE Cartridges

- Maximum Contaminant Removal
- Less Instrument Downtime
- Higher Sample Throughput



Description	Packing	Volume	qty.	cat.#	Price £
Resprep CarboPrep Plus SPE Cartridges	CarboPrep Plus	3 mL, 95 mg	30-pk.	25845	158.75

Make the Simple Switch to CarboPrep Plus SPE Cartridges and Improve Lab Productivity



The Advantage Is Clear!

Preconditioned and GC-FID Tested Septa Packaged in Ultra-Clean Blister Packs

- Plasma coating eliminates sticking in the injection port.
- Precision molding ensures consistent, accurate fit.
- Preconditioned and ready to use.



Thermolite Plus Septa

- Usable to 350 °C inlet temperature.*
- Ultra-low bleed minimizes background signal.

Diameter	qty.	cat.#	Price £
5 mm (3/16"), with CenterGuide, predrilled	50-pk.	23860	73.65
9 mm, with CenterGuide	50-pk.	23862	73.65
9.5 mm (3/8")	50-pk.	23877	73.65
10 mm	50-pk.	23878	73.65
Shimadzu Plug	50-pk.	23872	73.65
11 mm (7/16"), with CenterGuide	50-pk.	23864	73.65
11.5 mm, with CenterGuide	50-pk.	23866	73.65
12.7 mm (1/2"), with CenterGuide	48-pk.	23868	74.95
17 mm, with CenterGuide	48-pk.	23870	97.00

*For 17 mm inlets, the maximum temperature for Thermolite Plus septa is 300 °C.

Premium Non-Stick BTO Septa

- Usable to 400 °C inlet temperature.*
- Bleed and temperature optimized; ideal for demanding GC and GC-MS applications.

Diameter	qty.	cat.#	Price £
9 mm, with CenterGuide	50-pk.	27084	94.90
9.5 mm (3/8")	50-pk.	27086	94.90
10 mm	50-pk.	27088	94.90
Shimadzu Plug	50-pk.	27098	122.10
11 mm (7/16"), with CenterGuide, predrilled	50-pk.	27090	94.90
12.7 mm (1/2"), with CenterGuide**	50-pk.	27094	94.90
17 mm, with CenterGuide	50-pk.	27096	122.10

*For 17 mm inlets, the maximum temperature for BTO septa is 330 °C. For all injectors, minimum recommended operating temperature for BTO septa is 250 °C.

**12.7 mm and 17 mm septa packaged in precleaned glass jars. For 17 mm inlets, the maximum temperature for Thermolite Plus septa is 300 °C.

Note: Due to differences in inlet design, the actual septum temperature for a given inlet set point can vary by manufacturer. Restek recommends using only BTO septa in older Thermo TRACE and Focus GCs. For Thermo TRACE 1300/1310 GCs, this recommendation does not apply; septa can be used to their maximum recommended temperature.

Also available in 100-packs. Visit www.restek.com/septa to order.

Get Started with 1, 5, and Wax Columns

Save time and money by finding the right GC columns fast!

Featured Columns:

1-Type: Rxi-1ms Column: General-purpose option with excellent sensitivity.

ID	df	Length	Temp. Limits	qty.	cat.#	Price £
.25 mm	0.25 µm	30 m	-60 to 330/350 °C	ea.	13323	529.85

5-Type: Rxi-5Sil MS Column: Great for analyzing active compounds by GC-MS.

ID	df	Length	Temp. Limits	qty.	cat.#	Price £
0.25 mm	0.25 µm	30 m	-60 to 320/350 °C	ea.	13623	548.40

Wax-Type: Stabilwax Column: Rugged enough to withstand repeated water injections.

ID	df	Length	Temp. Limits	qty.	cat.#	Price £
0.25 mm	0.25 µm	30 m	40 to 250/260 °C	ea.	10623	489.30

To order these and many more Restek 1, 5, and wax columns—along with guidance on picking the right phase, a convenient column cross-reference tool, and more—visit

www.restek.com/15wax



Leverage the outstanding inertness, low bleed, and high reproducibility of Rxi 3-in-1 technology to gain:

- Accurate Data
- The Right Results Fast
- Maximized Instrument Uptime

Easily select a perfectly matched Rxi GC column from our wide selection of stationary phases that span the polarity range.

Visit www.restek.com/rxi to order your Rxi column today!

Get Guaranteed Method Performance with MXT-1HT SimDist Columns

- Lowest bleed for longest column lifetime.
- Reliably meet all ASTM D2887, D6352, D7169, D7213, and D7500 specifications.
- Individually tested for guaranteed performance.

ID	df	Length	Temp. Limits	qty.	cat.#	Price £
0.53 mm	0.10 µm	5 m	-60 to 430/450 °C	ea.	70112	374.40
	0.20 µm	5 m	-60 to 430 °C	ea.	70115	374.40
	0.21 µm	10 m	-60 to 430 °C	ea.	70118	508.65
	0.88 µm	5 m	-60 to 400/430 °C	ea.	70131	485.95
	0.88 µm	10 m	-60 to 400/430 °C	ea.	70134	508.65
	1.00 µm	10 m	-60 to 380/400 °C	ea.	70130	508.65
	1.20 µm	10 m	-60 to 380/380 °C	ea.	70119	508.65
	2.65 µm	10 m	-60 to 380/400 °C	ea.	70132	571.05
	5.00 µm	10 m	-60 to 380/400 °C	ea.	70133	571.05

For more MXT column options, visit www.restek.com/MXT



Promote Cleanliness and Convenience by Ordering Ferrules in Special Dial Packs



Two-Piece Graphite Capillary Ferrules

Ferrule ID	Fits Column ID	qty.	Similar to Part #	cat.#	Price £
0.4 mm	0.25 mm and less	10-pk.	Shimadzu 220-90765-00	24827	125.45
0.5 mm	0.32 mm	10-pk.	Shimadzu 221-32126-05	24828	89.55
0.8 mm	0.53 mm	10-pk.	Shimadzu 221-32126-08	24829	89.55

Graphite Capillary Ferrules for 1/16-Inch Compression-Type Fittings

Ferrule ID	Fits Column ID	qty.	Similar to Part #	cat.#	Price £
0.4 mm	0.10/0.15/0.18/ 0.25/0.28 mm	10-pk.	Grace 3112853, RF-100/0.4-G	20200	41.65
0.5 mm	0.32 mm	10-pk.		20201	41.65
0.8 mm	0.45/0.53 mm	10-pk.	Grace 8620138	20202	41.65

Vespel/Graphite Capillary Ferrules for 1/16-Inch Compression-Type Fittings (VG2 60/40)

Ferrule ID	Fits Column ID	qty.	Similar to Part #	cat.#	Price £
0.4 mm	0.10/0.15/0.18/ 0.25/0.28 mm	10-pk.	Grace 5124712, 100/0.4-VG2	20211	48.50
0.5 mm	0.32 mm	10-pk.	Grace 5124714, 100/0.5-VG2	20212	48.50
0.8 mm	0.45/0.53 mm	10-pk.	Grace 5124716, 100/0.8-VG2	20213	48.50

Find more at www.restek.com/GCacc

Rely on Our Proprietary Cleaning Process for Tubing Free of Residual Organics

For plumbing GC systems:



Cleaned Copper Tubing

ID	OD	Max Pressure	Wall Thickness	qty.	cat.#	Price £
0.065"	1/8"	2800 psig	0.030"	50 ft	22628	78.20
0.190"	1/4"	1000 psig	0.030"	50 ft	22629	94.15

For carrier, fuel, make-up, and auxiliary gas lines:



Rinsed and Cleaned 304 Stainless-Steel Tubing

Available in a variety of lengths and ODs.

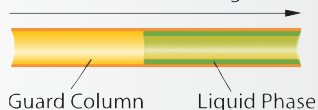
Rinsed and Cleaned 304 Stainless Steel Tubing

ID	OD	Min Qty	qty.	cat.#	Price £
0.03"	1/16"	101 ft	>100 ft/price per ft	21508	3.85
0.085"	1/8"	101 ft	>100 ft/price per ft	21514	3.55

These are our most popular dimensions, for other sizes, plus Coiled 316L Grade Stainless-Steel Tubing, and Coiled Welded/Drawn 304 Grade Stainless-Steel Tubing, visit www.restek.com/GC-tubing



Continuous Tubing



Get the Protection without the Connection

Integra-Guard columns incorporate a guard column and analytical column into one column to altogether eliminate the problems associated with this connection.

ID	df	Length	Temp. Limits	Modification	qty.	cat.#	Price £
Rtx-1							
0.25 mm	0.25 µm	30 m	-60 to 330/350 °C	w/5 m Integra-Guard Column	ea.	10123-124	536.90
0.53 mm	1.00 µm	30 m	-60 to 310/330 °C	w/5 m Integra-Guard Column	ea.	10155-126	640.95
Rtx-1701							
0.25 mm	0.25 µm	30 m	-20 to 280 °C	w/5 m Integra-Guard Column	ea.	12023-124	539.55
Rtx-5MS							
0.25 mm	0.25 µm	30 m	-60 to 330/350 °C	w/5 m Integra-Guard Column	ea.	12623-124	588.05
0.32 mm	0.25 µm	30 m	-60 to 330/350 °C	w/5 m Integra-Guard Column	ea.	12624-125	618.90
Rtx-624							
0.25 mm	1.40 µm	30 m	-20 to 240 °C	w/5 m Integra-Guard Column	ea.	10968-124	590.70
0.32 mm	1.80 µm	30 m	-20 to 240 °C	w/5 m Integra-Guard Column	ea.	10970-125	630.35
Rxi-55il MS							
0.25 mm	0.25 µm	30 m	-60 to 320/350 °C	w/5 m Integra-Guard Column	ea.	13623-124	618.90
	0.50 µm	30 m	-60 to 320/350 °C	w/5 m Integra-Guard Column	ea.	13638-124	618.90
0.32 mm	0.50 µm	30 m	-60 to 330/350 °C	w/5 m Integra-Guard Column	ea.	13639-125	663.00
Stabilwax							
0.25 mm	0.25 µm	30 m	40 to 250 °C	w/5 m Integra-Guard Column	ea.	10623-124	559.85
0.32 mm	1.00 µm	30 m	40 to 240/250 °C	w/5 m Integra-Guard Column	ea.	10654-125	594.20
0.53 mm	1.00 µm	30 m	40 to 240/250 °C	w/5 m Integra-Guard Column	ea.	10655-126	670.05

For our full list of Integra-Guard columns, visit www.restek.com

Feed Your GC High-Purity Gas with Minimal Downtime for Filter Changeouts

- High-purity output ensures 99.9999% pure gas (at max. flow of 2 L/min).
- Designed for easy, hassle-free cartridge changes.

All traps measure:
10 5/8" x 1 3/4" (27 x 4.4 cm)

Restek Super Clean Ultra-High Capacity Hydrocarbon Filter

Description	qty.	cat.#	Price £
Ultra-High Capacity Hydrocarbon Filter	ea.	22030	£139.50

Restek Super Clean Ultra-High Capacity Moisture Filter

Description	qty.	cat.#	Price £
Ultra-High Capacity Moisture Filter	ea.	22028	£139.50

Restek Super Clean Ultra-High Capacity Oxygen Filter

Description	qty.	cat.#	Price £
Ultra-High Capacity Oxygen Filter	ea.	22029	£139.50

Replacement Gas Filters for Restek Super Clean Gas Filter Kits

Description	qty.	cat.#	Price £
Replacement Helium-Specific Gas Filter (removes oxygen, moisture, and hydrocarbons)	ea.	21982	£200.20
Replacement Triple Gas Filter (removes oxygen, moisture, and hydrocarbons)	ea.	22020	£159.70

Control Your Routine Gas Filter Maintenance Schedule

Description	Includes	qty.	cat.#	Price £
Electronic Indicator for Standard Super Clean Gas Filters	Battery, USB cable, and mounting clip	ea.	22645	£63.85
Electronic Indicator for Click-On In-Line Super Clean Gas Filters	Battery, USB cable, and mounting clip	ea.	22646	£63.85
Electronic Indicator for Click-On In-Line Super Clean Big Trap Gas Filters	Battery, USB cable, and mounting clip	ea.	22647	£63.85



RESTEK
Pure Chromatography

Questions? Contact us or your local Restek representative (www.restek.com/contact-us).

Restek patents and trademarks are the property of Restek Corporation. (See www.restek.com/Patents-Trademarks for full list.) Other trademarks in Restek literature or on its website are the property of their respective owners. Restek registered trademarks are registered in the U.S. and may also be registered in other countries. To unsubscribe from future Restek communications or to update your preferences, visit www.restek.com/subscribe To update your status with an authorized Restek distributor or instrument channel partner, please contact them directly.

© 2021 Restek Corporation. All rights reserved. Printed in the U.S.A.

www.restek.com



Lit. Cat.# GNES3492-UK